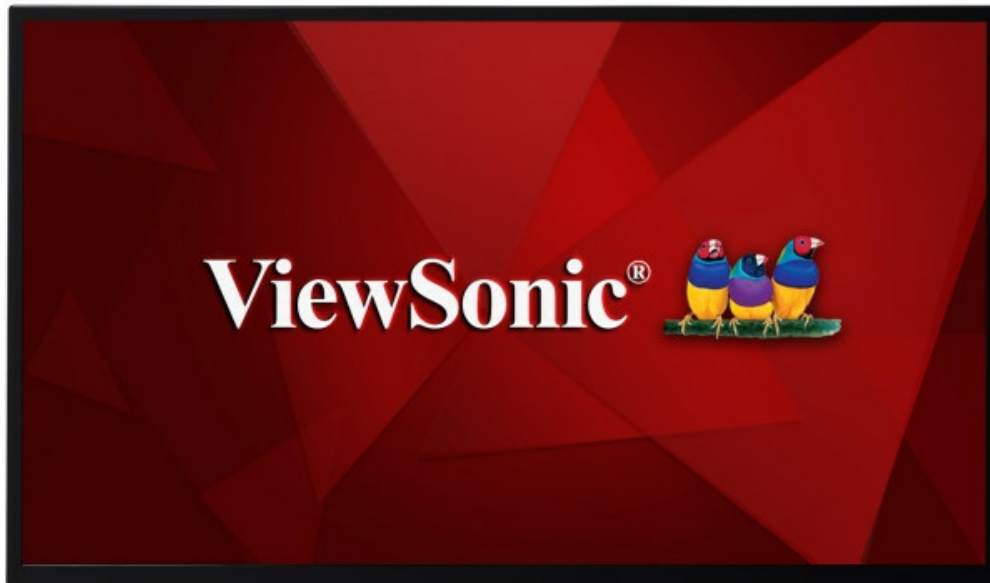


32 inch Full HD Enhanced Viewing Comfort USB Playback Commercial Display



CDE3205-EP



- Full HD 1080p resolution
- Integrated USB Multimedia Player
- Dual 10W Integrated Speakers
- Supports HDMI CEC pass-through
- Blue Light Filter eyecare technology

The ViewSonic CDE3205 is a great value 32" (31.5" viewable) Full HD LED commercial display with high reliability working time 16 hours per day/7 days a week for retail, hospitality, and QSR (Quick Service Restaurant) environments. In addition to versatile connectivity options, including HDMI, VGA, DVI, YPbPr, USB, IR, RJ45, the display comes with a convenient USB multimedia playback functionality. With 1920 x 1080 resolution, 350-nit brightness, IPS 178-degree wide viewing angles and 2 x 10W stereo speakers, the slim-bezel CDE3205 delivers vivid images and remarkable sound for superior multimedia performance. The HDMI CEC pass-through support provides one control for multiple HDMI-connected devices while the free-bundled vController software makes remote display management easier via RSS232/RJ45 port. Creating a more comfortable viewing experience, the display is equipped with Blue Light Filter technology.

Integrated USB Multimedia Player

This display features an integrated media player with a convenient USB playback function. Now photos, music, and 1080p video can be quickly displayed on-screen directly from a USB drive – without the need for a PC.



vController™ Software: Remote Display Management

Remote display management without needing to type in commands. By using an RS232 or RJ45 connection between a computer and digital signage, users can manage the signage's OSD settings such as On/Off, display signal source, audio, and other general items.



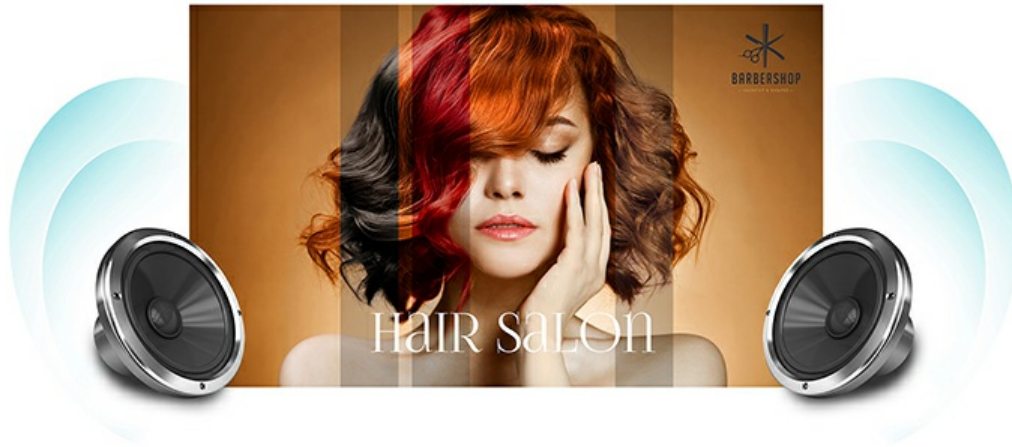
Control Multiple HDMI Devices

With HDMI CEC functionality, remote controller signals can be transmitted via HDMI cable to connected HDMI devices. This enables out-of-sight DVD players, sound systems, and other devices to be directly controlled with the display's remote controller.



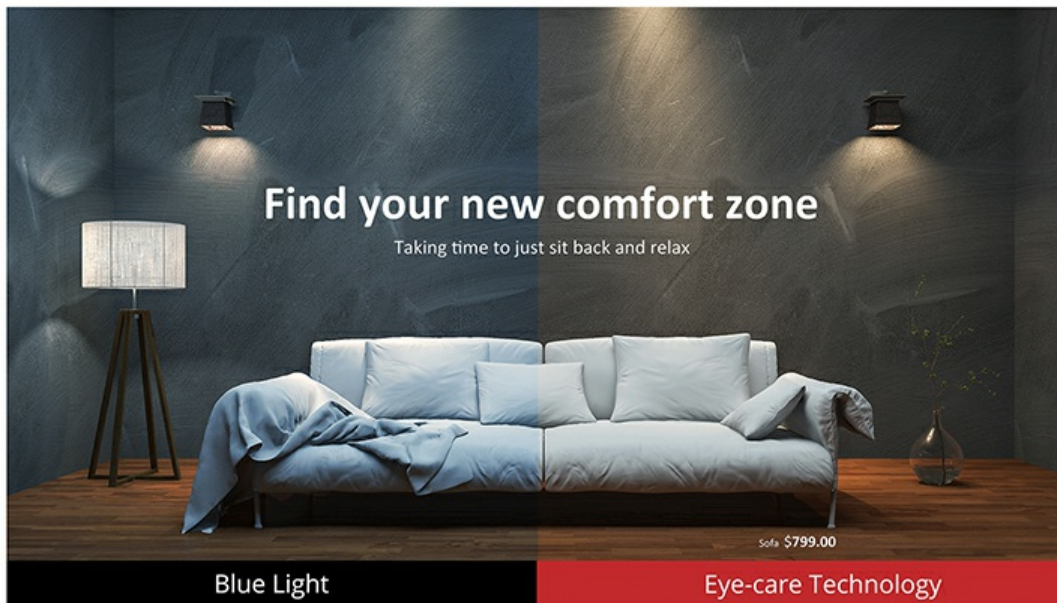
Broadcast Multimedia without External Speakers

The powerful enough 20W sound pressure level from 2 speakers deliver incredible sound while combining eye-catching multimedia content - creating a lasting audio-visual impression on your audience.



Enhanced Viewing Comfort

Blue Light Filter helps to eliminate eye strain from extended viewing periods.



Technical Specifications

LCD PANEL

Panel Size
Type/ Tech

32"
TFT LCD Module with LED Backlight

Display Area (mm)	698.4 (H) x 392.85 (V)
Aspect Ratio	16:09
Resolution	1920 x 1080
Colors	16.7M colors
Brightness	350 nits (typ.)
Contrast Ratio	1200:1 (typ.)
Response Time	8 ms
Viewing Angles	H = 178, V = 178 (typ.)
Backlight	WLED
Backlight Life	30,000 Hours Min.
Hardness	3H

INPUT	HDMI	x 1
	RGB / VGA	x 1
	DVI	x 1
	Audio	x1 PC audio (3.5 mm), x 1 (RCA L/R)
	CVBS (AV)	x 1 (Share with Y)
	YPbPr	x 1
	RS232	x 1
	IR	x 1 (over audio port)

OUTPUT	Audio	x 1 (RCA L/R)
	RS232	x 1
	IR	x 1 (over audio port)

LAN	RJ45	x 1
------------	------	-----

USB	2.0 Type A	x 1 (USB Playback)
------------	------------	--------------------

SPEAKERS		10W x 2
-----------------	--	---------

COMPATIBILITY	VGA	Up to 1920 x 1080
	DVI	Up to 1920 x 1080
	HDMI	480i, 480p, 720p, 1080i, 1080p
	CVBS	480i
	YPbPr	480i, 480p, 720p, 1080i, 1080p

POWER	Voltage	100-240 VAC +/- 10% Wide Range, 50-60Hz +/-3 Hz
	Consumption	Normal 57 W, Max 81 W

ERGONOMICS	Wall Mount (VESA®)	100x100mm / 200x200mm ; Screw: M4*8 mm
-------------------	---------------------	--

OPERATING CONDITIONS	Temperature (° C)	5°C to 40°C
	Humidity	20% ~ 80% non-condensing

"DIMENSIONS (W x H x D)"	Physical (mm / inch)	726.5 x 462.93 x 239.8 mm / 28.6 x 18.23 x 9.44 in. (with Stand)
	Physical w/o Stand (mm / inch)	726.5 x 425.4 x 63.6 mm / 28.6 x 16.75 x 2.5 inch
	Packaging (mm / inch)	818 x 547 x 139 mm / 32.2 x 21.54 x 5.47 inch

WEIGHT	Net (kg / lb)	6.67 kg / 14.7 lbs (with Stand)
---------------	---------------	---------------------------------

Net w/o Stand (kg / lb) 5.20 kg / 11.46 lbs

Gross (kg / lb) 7.8 kg / 17.20 lbs

REGULATIONS	Standard	CE, CB, RoHS, ErP, WEEE
--------------------	----------	-------------------------

What's in the box?

1. CDE3205-EP commercial display
 2. Remote Control with batteries
 3. User manual CD wizard
 4. Quick Start Guide
 5. Power Cables
 6. VGA cable
 7. RS232 cable
 8. RS232 daisy chain cable (2.4mm – 2.4mm)
 9. IR sensor cable
-

ViewSonic® Limited Warranty

ViewSonic provides customers with the security of a manufacturers warranty against defected products. The type and duration of the applicable warranty service varies by product type, country of purchase and can also vary on an individual basis according to customer requirements agreed at time of purchase. The warranty will expire after the end of the warranty period.

For more product information, visit us at **www.viewsoniceurope.com**

All rights reserved by ViewSonic Corporation. All other Corporate names and trademarks are the property of their respective companies. E&EO. All prices and specifications are subject to change without written notice. Images are for illustrative purpose only. Terms & Conditions Apply.