



- UFT (Ultra Fine Touch) Technology
- myViewBoard™ digital whiteboard software
- ViewBoard® Cast 4-way split screen content sharing software
- SmartPort™ shared front USB ports for internal & external PCs
- 2.1 Stereo sound with built-in subwoofer

The ViewBoard® IFP50-2EP series embraces UFT (Ultra Fine Touch) Technology to offer more precise writing and faster processing time than traditional IR panels. Smooth, dual-pen writing with our new, slim 3mm pens enables groups of teachers and students to work efficiently on any detailed tasks that require the use of accurate, fine-tipped pens. The ViewBoard® IFP50-2EP series is designed with a slim bezel to broaden your viewing experience so that even at the edge of the panel you can write clearly and confidently. Integrated myViewBoard™ digital whiteboard software allows users to collaborate on the go, while ViewBoard® Cast provides 4-way, split-screen content sharing.

## UFT Technology

Ultra Fine Touch Technology produces a lag-free, pen-on-paper writing experience. Writing accuracy is greatly improved and student-teacher interaction flows more naturally thanks to real-time response rates, dual-pen recognition and our new 3mm tipped pens.



3mm  
diameter pen

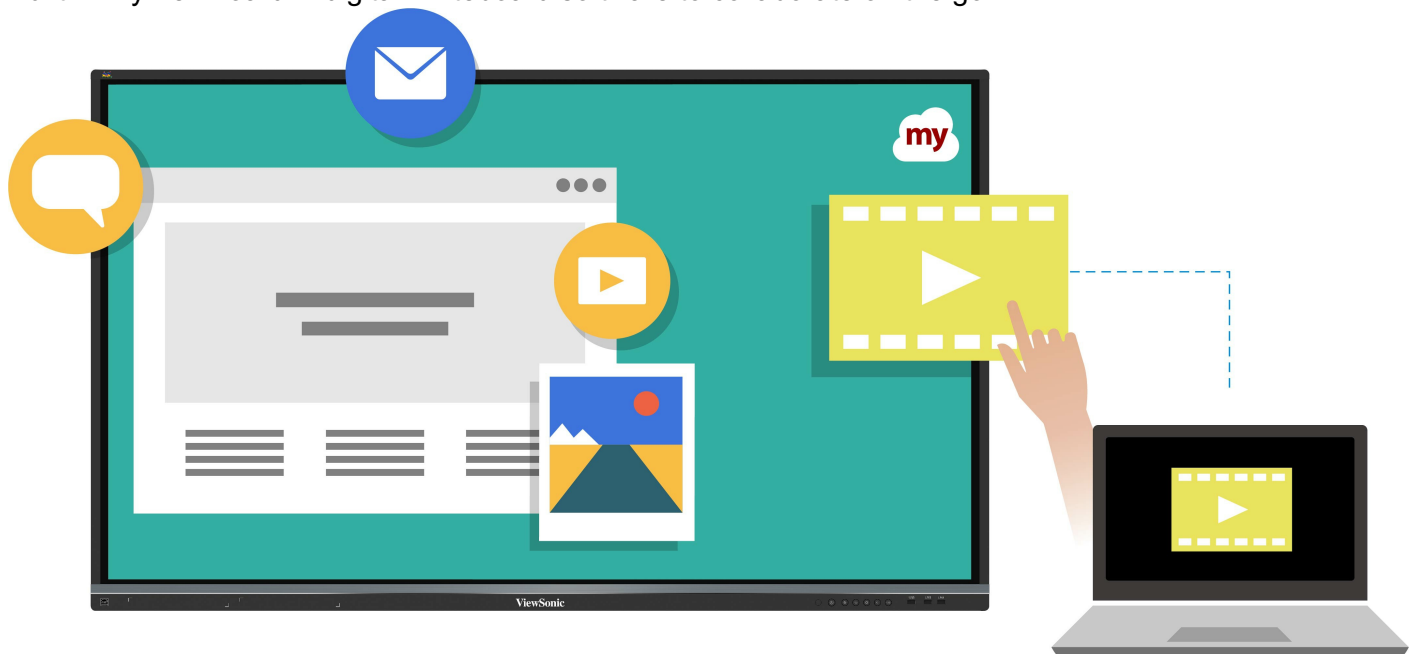
## Dual-Pen

Automatically detect pen diameter (8mm & 3mm) and write simultaneously with different colours and thicknesses.



## Full Native Performance on embedded OS

Built-in myViewBoard™ digital whiteboard software to collaborate on the go.



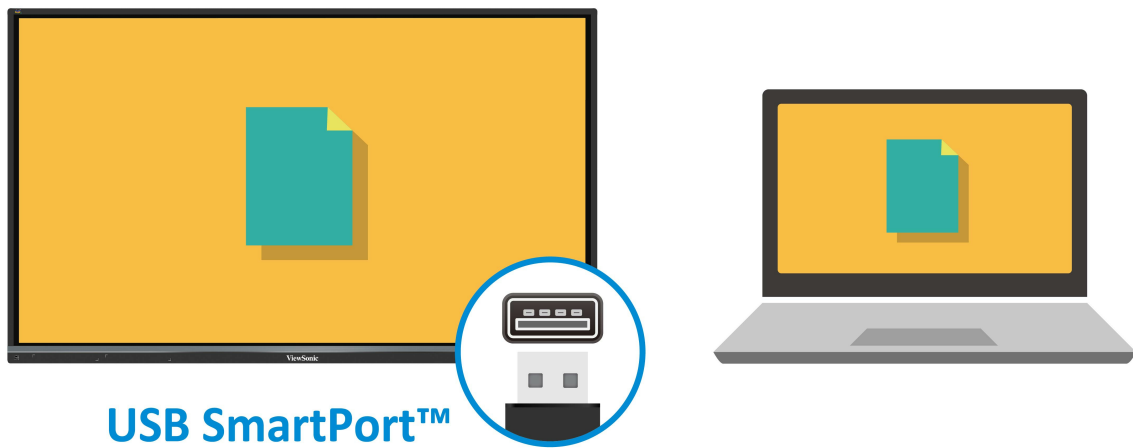
## 4-way Split Screen

4-way split screen content sharing with built-in ViewBoard® Cast software.



## Shared USB Ports

SmartPort™ shared front USB ports for internal & external PCs.



## Stereo Sound

2.1 Stereo sound with a built-in subwoofer.



## Faster Internet

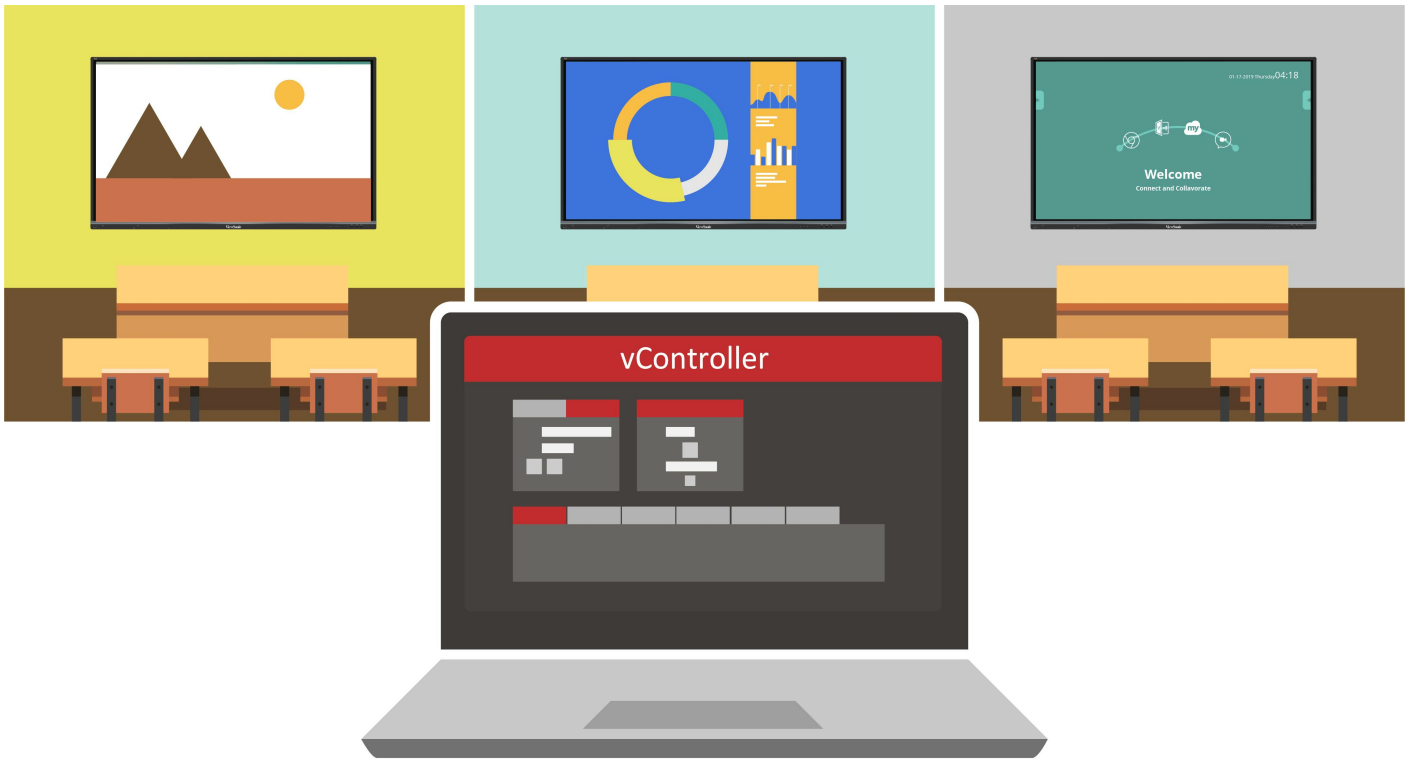
GigaLAN provides a faster, more powerful internet connection.

# GigaLAN



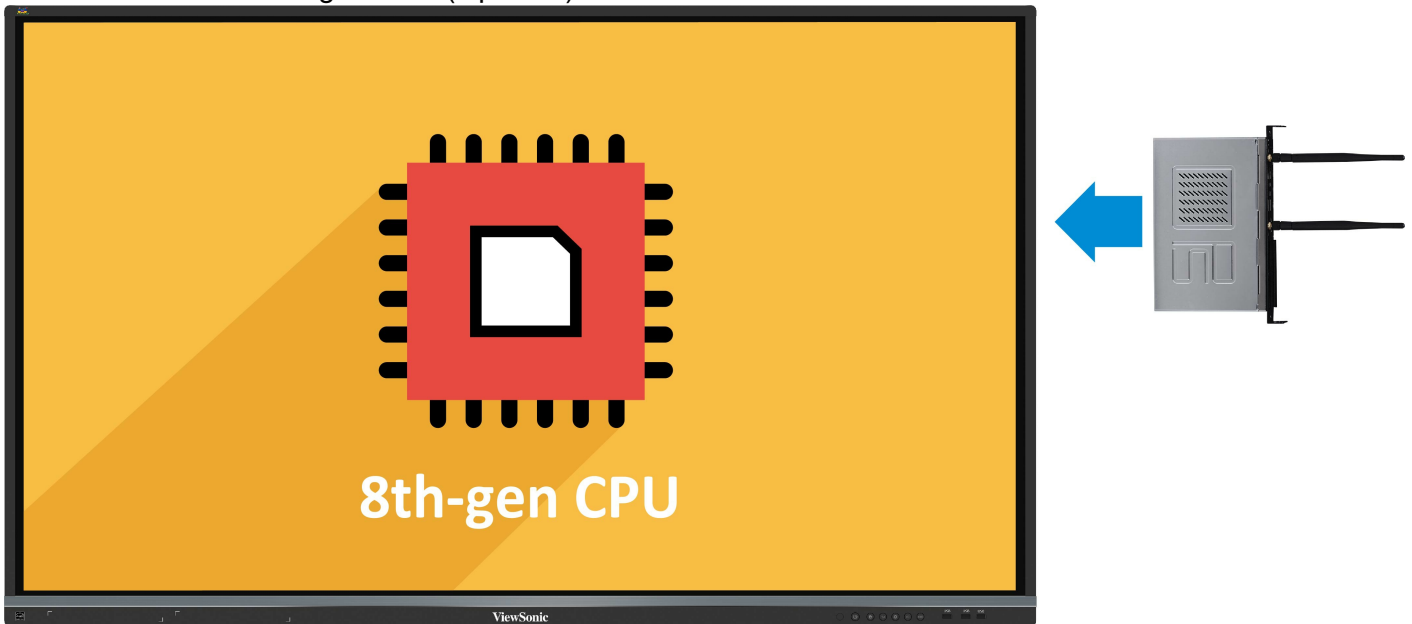
## Remote Control

Built-in RS232 port and vController software for remote control.



## Slot-in PC

Slot-in PC with Intel 8th-gen CPU (Optional).

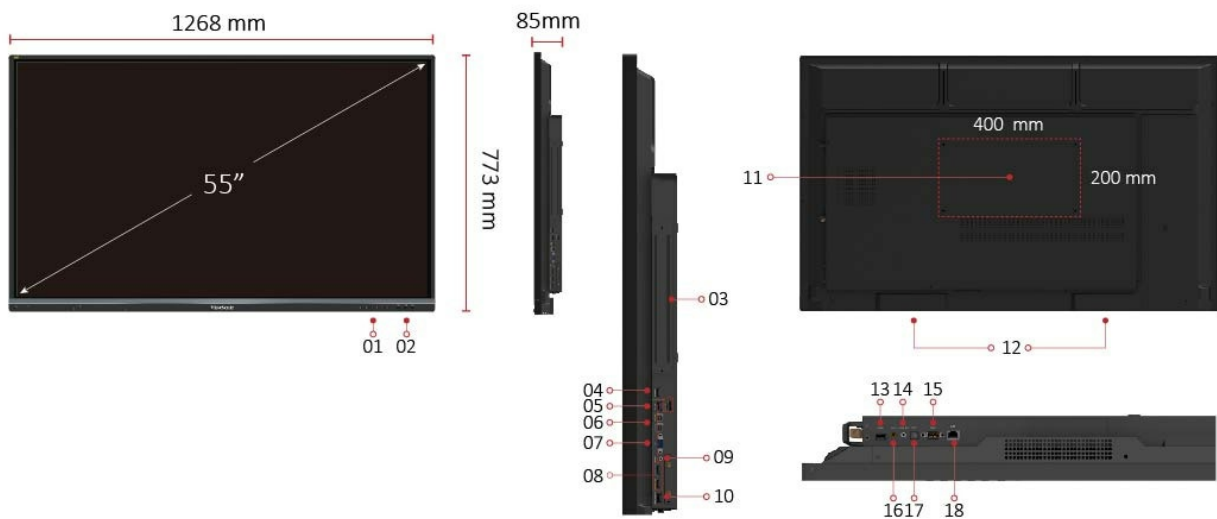


## Web Camera

Top-mounted 1080p web camera (Optional).



## I/O Ports



1. MENU CONTROLS
2. USB X 3
3. EMBEDDED PC SLOT
4. HDMI OUT
5. USB 3.0
6. TOUCH X 2
7. VGA
8. HDMI IN X 2
9. AUDIO IN
10. CAMERA PORT
11. VESA® WALL Mount 400x200 mm

- 12. INTERNAL SPEAKERS
- 13. USB 2.0
- 14. AUDIO OUT
- 15. RS232
- 16. AV IN
- 17. SPDIF
- 18. LAN

## Technical Specifications

---

<b>Display</b>	Panel Size	55"
	Type/Tech	TFT LCD Module with DLED Backlight.
	Display Area (mm)	1209.6(H) x 680.4 (V) (54.64" diagonal)
	Aspect Ratio	16:9
	Native Resolution	UHD 3840x2160(Pixels)
	Colours	1.07B colours (10bit)
	Brightness	350 nits (typ.) 300 nits (min.)
	Contrast Ratio	5000:1 Typ.
	Response Time	9ms
	Viewing Angles	H = 178, V = 178 typ.
	Backlight Life	30,000 Hours (Min)
	Surface Treatment	Anti-Glare
	Bezel	Slim
Orientation	Landscape	
<b>Platform</b>	Processor	ARM Cortex A73 dual-core 1.2GHz
	RAM	2GB DDR4
	Storage	16GB
<b>Touch</b>	Type/ Tech	IR Recognition
	Touch Resolution	32767 x 32767
	Touch Point	20 points touch, 10 points writing
<b>INPUT</b>	HDMI	2.0 x3 (3840x2160 @60Hz)
	RGB / VGA	x1
	DisplayPort	N/A
	DVI	N/A
	S-Video	N/A
	RF (TV)	N/A
	Audio	x1 (PC audio in)
	CVBS	x1
	YPbPr	N/A
	MIC(Microphone)	N/A
	RS232	x1
	IR Pass Thru	N/A
	SD/SDHC	N/A
OPS	x1 PC Slot (proprietary)	
<b>OUTPUT</b>	RGB / VGA	N/A



	HDMI	x1
	DisplayPort	N/A
	DVI	N/A
	Audio	x1 (Earphone out)
	CVBS	N/A
	YPbPr	N/A
	SPDIF	1(optical)
	RS232	x1
	IR Pass Thru	N/A
	Remote Control Out	N/A
<b>LAN</b>	RJ45	x1
<b>USB</b>	Type A	USB 2.0 x4(including 2 USB port in front) USB 3.0 x2(including 1 USB port in front)
	Type B	x2, for touch
	Type C	N/A
	Mini USB	N/A
	Micro USB	N/A
<b>SPEAKERS</b>	<b>SPEAKERS</b>	10W x 2 + 15W x 1
<b>Camera plate on top for screw-in webcam installation</b>	Camera plate on top for screw-in webcam installation	Yes
<b>COMPATIBILITY</b>	RGB PC/HDMI PC	Refer to timing table
	CVBS	480i
	S-Video	N/A
	YPbPr	N/A
	HDMI	3840x2160
	DisplayPort	N/A
	DVI	N/A
<b>Embedded OS</b>	Embedded OS	Android 7
<b>USB SUPPORTED FILE FORMAT</b>	<b>USB SUPPORTED FILE FORMAT</b>	Picture - BMP, JPEG, PNG  Video - Codec: MPEG1, MPEG2, MPEG2-PS, MPEG4, MKV Container: MPG, MP4, MOV, VOB, DAT, MKV  Audio - Codec: AAC, HEAAC, MPEG1, MPEG2 Container: AAC, M4A, MP3
<b>Bundle Software</b>	Basic Annotation Software	myViewBoard / vBoard Lite

	Pro Annotation Software	myViewBoard for Windows (Embedded in Windows Slot-in PC)
	Wireless Presentation with Touch Feedback: Viewboard Cast	yes
	Zoom	Yes
	ViewSonic Launcher	Embedded
<b>Special Features</b>	All-in-one USB port (combine Windows/Android USB port; no need to distinguish them anymore)	Front "SmartPort USB" to all channels.
	One Click to Cloud Drive	No
	Simple LAN sharing between IFP and slot-in device	yes
<b>Power</b>	Voltage	100-240VAC +/- 10% Wide Range
	Consumption	81W (Typ.) < 0.5 W ("Off")
<b>ERGONOMICS</b>	Tilt	N/A
	Wall Mount (VESA® )	400 x 200
<b>OPERATING CONDITIONS</b>	Temperature (° C)	0°C to 40°C
	Humidity	10% ~ 90% RH non-condensing
<b>DIMENSIONS (W x H x D)</b>	Physical (inch / mm)	49.9 x 30.4 x 3.3 in / 1268 x 773 x 85 mm
	Packaging (inch / mm)	56.2 x 34.6 x 8.7 in / 1428 x 878 x 220 mm
<b>WEIGHT</b>	Net (lb / kg)	68.34 lb / 31 Kg
	Gross (lb / kg)	85.98 lb / 39 Kg
<b>REGULATIONS</b>	REGULATIONS	FCC, cTUVus, CB, CE, BSMI, RCM, EAC
<b>Energy Star version</b>	Energy Star version	ES7.1
<b>EEL rating</b>	EEL rating	A+
<b>ProAV certificate readiness</b>	Crestron	TBD
	Extron	TBD
	AMX	TBD
<b>PACKAGE CONTENTS</b>	PACKAGE CONTENTS	<ol style="list-style-type: none"> <li>1. Power cable (3 metres) x 4</li> <li>2. Remote control</li> <li>3. USB cable (5 metres)</li> <li>4. AV cable</li> <li>5. Touching pen x 2</li> <li>6. Quick Start Guide</li> <li>7. RS232 adapter</li> <li>8. Clamp x 5</li> <li>9. Plate</li> <li>10. Screw x 8</li> </ol>

11. HDMI cable (3 metres)

---

Compatible Slot-in PC	Compatible Slot-in PC	VPC14-WP series VPC10-WP series VPC15-WP series VPC16-WP series VPC17-WP series
-----------------------	-----------------------	---

---

UPC Code	UPC Code	76690793881 4
----------	----------	---------------

---

## **ViewSonic® Limited Warranty**

---

ViewSonic provides customers with the security of a manufacturers warranty against defected products. The type and duration of the applicable warranty service varies by product type, country of purchase and can also vary on an individual basis according to customer requirements agreed at time of purchase. The warranty will expire after the end of the warranty period.

---

For more product information, visit us at **[www.viewsoniceurope.com](http://www.viewsoniceurope.com)**

All rights reserved by ViewSonic Corporation. All other Corporate names and trademarks are the property of their respective companies. E&EO. All prices and specifications are subject to change without written notice. Images are for illustrative purpose only. Terms & Conditions Apply.